

JLA



Newsletter

Vol. 31

Apr 2016

Contact / mail@jiluxembourg.org

Homepage / http://www.jiluxembourg.org/

※New members are always welcome to  
JLA Membership!

## Event Report

### Welcoming Japanese Geisha Japanese sake event at Cercle Munster.

In collaboration with Slow Food Grand-Duchy and Ishikawa Branding Project, the "Geisha dance performance with Sake & French cuisine" on 17 March was a night to remember. Exclusively selected sake was all flown in from Ishikawa-prefecture just for this special event alongside fresh seasonal French cuisine served at the premise of Cercle Munster in Grund. The special guest of 2 Geisha from Kanazawa-city of Ishikawa prefecture were the highlight of the night dancing beautifully. The audience welcomed the special guest with great cheers and applause, taking the time to take pictures with the Geisha's. The night was also attended by the Japanese Ambassador Ms. Atsuko Nishimura, and it was a successful night immersed deeply in Japanese culture.



(From left) : Ms. Antoine, Ms. Witolla, Mr. Gramegna, Ms. Maingard, Ms. Nishimura



(From left) : Ms. Sayaka, Ms. Mitsuha



(From left) : Ms. Mitsuha, Ms. Nishimura, Ms. Ferrari, Ms. Sayaka, Ms. Witolla

## Notice from JLA

### We have renewed our JLA Homepage

Some of you may already know, but we have recently renewed our JLA Homepage! The new design gives you easier viewing and provides both Japanese and English. You can also view our past newsletters. We are regularly updating our contents so feel free to visit us, and don't forget to LIKE our Facebook page as well!



<http://www.jiluxembourg.org/>

※ This QR Code links directly to our HP.



The past JLA events as well as Luxembourg local events and so many more will be regularly posted!





## Media publication information

JLA has been featured in the May edition of "DELANO Magazine Issue 43"! Click on the link below to view the online version  
<http://delano.lu/issue-medium>



We are featured on  
 pages 66 and 67.  
 Check it out!

LIFESTYLE GETTING INVOLVED > Text by ALIX HASSE > Photography by LALA LA PHOTO

## From geishas to giving

The Japanese Ladies Association of Luxembourg aims not only to help Japanese people moving to Luxembourg integrate into the Grand Duchy, but also to promote Japanese culture across the Greater Region.

Makiko Witolia Hayashi is no stranger to living abroad. Since leaving her hometown of Nagoya (located roughly halfway between Tokyo and Osaka), Makiko has lived and worked in the US, London, Hong Kong and Frankfurt. What she was on maternity leave, her German husband accepted a position in Luxembourg, and for the first time Makiko (pictured on the right) had to learn all there is to know about living in a new country without the assistance of working colleagues. "When you are working and move to a new country, you have your colleagues to help you readjust. However, when you are not working, it is more difficult to integrate into society. That's why I and two associates decided to found the JLA in April 2012."

The initial purpose of the JLA was to provide its members, predominantly mothers and spouses, with information and orientation in the Japanese language on life in Luxembourg. However, it soon became apparent that there were many non-Japanese nationals interested in learning about Japanese culture, cuisine and the

language. "The JLA currently has approximately 300 members," explains Makiko, the association's chair. "Less than half of the members are actually Japanese." Many of those members are individuals who are travelling or relocating to Japan, but some have learnt to speak Japanese and want to practice their language skills. "Every month we have a Japanese conversation evening, usually at the Sushi Shop in the city centre, where people can come along and speak Japanese. It's surprising how many people in Luxembourg know our language."

The JLA organises a variety of events throughout the year to celebrate Japanese culture. On 17 March, they held an event combining Japanese sake and French cuisine with live entertainment from two traditional geishas of the Ishikawa branding project. "Most Japanese nationals have never seen traditional geishas perform this ceremony. It is often performed for tourists, but not authentically, so this event is extremely special," adds Makiko. Other events are often organised in collaboration with the Japanese embassy, such as the popular tea ceremony or the "Wagashi" traditional sweet making workshop held in the spring.

Charitable work is also an extremely important part of the group's agenda. "The JLA supports the (Red Cross and the

International Bazaar every year and the event requires a great deal of planning," says Makiko. "This year the JLA has responsibility for organising the products and food sold at the bazaar. Last year the Japanese stand sold approximately 3,000 yakitori and 500 sushi boxes, so that is a lot of work for us." Planning for the event begins in April and continues throughout the year including a sushi-making class in October. For the event itself, around 70 volunteers are needed to help sell the products. In addition to the International Bazaar, the JLA provides an annual monetary donation to Ashinaga, a charity that assists orphaned students, including children who lost parents in the great Hanshin earthquake in 1995 and the eastern Japan earthquake and tsunami in 2011. Ashinaga provides educational assistance, summer camps and "Rainbow Houses" in Tokyo and Kobe, where children can talk with professionals and others who have suffered from the emotional loss of parents.

Despite the transient nature of the Japanese population in Luxembourg, Makiko believes the club has been so successful partly because of Japanese culture. "The Japanese are renowned for being loyal, sincere and collaborative. We are lucky to have people with these attributes in our association and their dedication is the key to our future."



GETTING INVOLVED

### JAPANESE ORGANISATIONS

**JLA**  
 Despite the name, the Japanese Ladies Association of Luxembourg is open to both men and women of any nationality who have an interest in Japan and its culture.  
[www.jla.lu](http://www.jla.lu)  
 Email: [info@jla.lu](mailto:info@jla.lu)

**JAPANESE STAND**  
 The Japanese stand is a charity event which takes place in the city centre.  
[www.japanese-stand.lu](http://www.japanese-stand.lu)  
 Email: [info@japanese-stand.lu](mailto:info@japanese-stand.lu)

**ASHINAGA**  
 The charity support group publishes in both English and Japanese on its website.  
[www.asinaga.org](http://www.asinaga.org)

**JAPANESE EMBASSY**  
 The Japanese embassy in Luxembourg website provides further cultural information.  
[www.embassy-japan.lu](http://www.embassy-japan.lu)

**SUSHI**  
 Despite popular western belief, sushi is usually only eaten in Japan at restaurants or on special occasions, where large bouquets are used. When sushi is made and eaten, it is often accompanied by a drink. Japanese food has become more mainstream in everyday life.

## Community notebook



### BIG DONATIONS

**BAZAR INTERNATIONAL**  
 An all-time record 600,000 was donated to 97 charities worldwide from the receipts taken at the Bazar International last year.  
[www.bazarinternational.lu](http://www.bazarinternational.lu)



### NEW BOARD

**THE NETWORK**  
 The Network, Luxembourg's oldest English speaking professional women's association, has elected a new board under president Lisa Finkbeiner.  
[www.thenetwork.lu](http://www.thenetwork.lu)



### THEATRE FEST

**FEATS**  
 The annual Festival of European Angling Theatre of Societies takes place at the Centre culturel in Wilkshaus St Pierre in Brussels, 5-8 May.  
[www.feats.eu](http://www.feats.eu)



### STUDENT NETWORK

**KING'S COLLEGE ALUMNI ASSOCIATION**  
 A new club for King's College London alumni has been launched in Luxembourg. Members and friends met at the residence of the British Ambassador.  
[www.kingscollegealumni.lu](http://www.kingscollegealumni.lu)



### NEWCOMERS COURSES

**AMICHAM**  
 The business chamber continues its series of "Newcomers Orientation Courses for Third-Country Nationals" in English through September. Visit the Amicham website for details.  
[www.amicham.lu](http://www.amicham.lu)



### 15TH ANNIVERSARY

**INDIAN ASSOCIATION**  
 2016 marks the 25th anniversary of the Indian Association of Luxembourg. Details of the celebrations will be unveiled soon in Delano.  
[www.ia.lu](http://www.ia.lu)



### COLLECTION

**RED CROSS**  
 The Red Cross continues its nationwide "collection month" throughout April under the motto "More for My Neighbourhood" (Thanks for your humanity).  
[www.redcross.lu](http://www.redcross.lu)



### AUDITIONS

**NEW WORLD THEATRE CLUB**  
 Director Gerson Guller is building auditions for the next NWTC production, Martin McDonagh's The Pillowman, at Abitibi on 30 April. See details on the website.  
[www.nwtc.lu](http://www.nwtc.lu)

Photos: JLA, Ashinaga, The Network, Amicham, Indian Association, Red Cross, NWTC

DELANO May 2016

May 2016 DELANO

Why not plan a visit to  
 the museums on 21(Sat)  
 & 22(Sun) May?

Museums in the city of Luxembourg  
 are open to the public for free!

Villa Vauban

Musée d'Art de la ville de Luxembourg

18, avenue Emile Reuter 2420 Luxembourg

10:00 ~ 18:00

Musée d'Histoire de la Ville de Luxembourg

14, rue du Saint-Esprit 1475 Luxembourg

10:00~18:00

Musée national d'histoire et d'art

Marche-aux-Possons 2345 Luxembourg

10:00~18:00

Mudam Luxembourg

Musée d'Art Moderne Grand-Duc Jean

3, Park Dräi Eechelen 1499

Luxembourg-Kirchberg

11:00~18:00

There are more museums taking part  
 in this event. Please visit the site  
 below for the further information.  
<http://museumsmile.lu/>





## Adult learning Language school information

Why not try to learn a new language this spring season!

There are several adult learning language schools on offer in Luxembourg. For Japanese residents, learning not just English but, French and German is quite popular also. We will introduce you to some we recommend if you are thinking of starting to learn a new language.



INL building (Currently under renovation)



INL temporary building



Prolingua

### Prolingua

This school is a walking distance from the Luxembourg city centre. The languages offered are: English, French, German, Luxembourgish, Spanish, Italian, Dutch, Portuguese, Russian, and Polish. Each class is small and they also offer private lessons.

45a, Avenue Monterey  
L-2163 Luxembourg  
<http://www.prolingua.lu/>

### I N L

Institut National des Langues

The languages offered in this school are: English, French, German, Luxembourgish, Spanish, Portuguese, Chinese and Italian. The class times varies between 8:10 ~ 20:40 offering different levels depending on your skills. It offers flexibility to match your schedules.

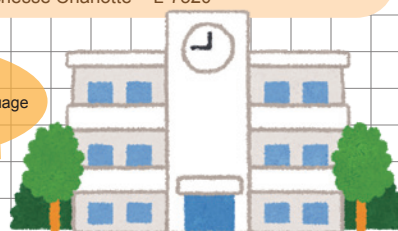
<http://www.insl.lu/>  
Kirchberg  
15, rue Léon Hengen – L - 1745  
Mersch  
57, avenue Grande-Duchesse Charlotte - L-7520

### Berlitz

Berlitz is a globally renowned language school (well-known in Japan also) is located in the very centre of Luxembourg city on the Grand-Rue street, in such a convenient location. The school is a perfect spot to attend in between your days, close by to many shops and restaurants. 22 languages are available.

89-93, Grand-Rue Entrance 14, rue Beck  
1661 Luxembourg  
<http://www.berlitz.lu/en/luxembourg/>

We could not list out all,  
but there are a lot more language  
schools Luxembourg offers!



## This month's recipe

### Using seasonal produce, Spring salad dressed with tofu

[Ingredients] Serves 2

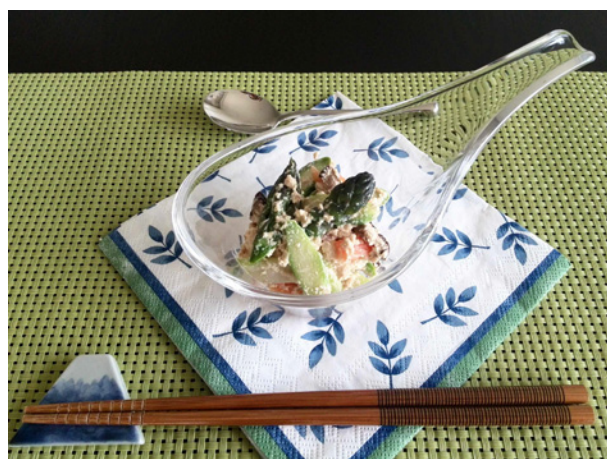
- A. Silken tofu approx.. 200 grams
- B. 2 spears of green asparagus
- C. 3 cm of carrot
- D. 6 shiitake mushrooms
- E. 4 TBS mayo
- F. 1 TBS soy sauce
- G. Salt & pepper to taste

[Method]

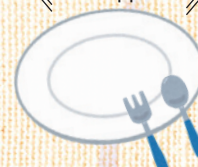
1. Place (A) in a pot and bring to boil. Strain, and wrap using paper towel and place a weight to squeeze out excess water.  
(The size should decrease by about a half)
2. Boil (B) (with touch of salt) to your preferred texture and cut in an angle (5mm thickness) and use paper towel to pat dry.
3. Boil (C) (with touch of salt) to your preferred texture and cut into strips (5mm thickness) and use paper towel to pat dry.
4. Grill (D) in an oven (230°C) for 7~9min each side and slice in 5mm thickness.
5. Using a mortar, grind (1) until smooth and add EFG.
6. Right before serving, mix (2)(3)(4) into (5) and serve into a dish. Voila!

\*Tip is to drain excess water of the ingredients properly.

\*This recipe will work with any other vegetables of your choice.



≡ Bon Appétit! ≡





# JLA Activity Report

## French Cooking Class

Our first JLA French cooking class for 2016 started off with the 3 course menu consisting "Encornets farcis à la sicilienne" as the starter, "Bouillabaisse et sa rouille" as the main, and "Crème brûlée à la crème de pistache" as the desert. The bouillabaisse had a hearty taste enriched by fish bones. The flavor of the crème brûlée was so impressive with the harmony of pistachio cream, roasted pistachios and glazed Morello cherries (griotte). The next class is scheduled for May 30th (Mon).



In addition to our regular activities, JLA has organized new ones from 2016, those are as follows:

- ◆ German home cooking class
- ◆ Kimono dressing & Japanese traditional dance class
- ◆ Porcelarts class
- ◆ Herbal Lesson

Each class has limited capacity and certain deadline for application.

If you have any interest, please contact JLA as early as possible to: [mail@jla-luxembourg.org](mailto:mail@jla-luxembourg.org)

## JLA Upcoming Events

**New!**

**Porcelarts class:**

May 4th (Wed), May 17th (Tue),  
May 31st (Tue), Jun 7th (Tue)

**Japanese free-talk meeting:**

May 18th (Wed) 19:00~

**Japanese flower arrangement class:**

May 23rd (Mon)

**New!**

**Herbal lesson:**

**"Natural herbal remedy" workshop**

Let's put it in your daily life!

Date & Time: May 27th (Fri) 9:30 - 11:30

Place: Teacher's house

**French cooking class:**

May 30th (Mon)

※JLA annual general meeting is  
scheduled for May 25th (Wed)



## Luxembourg upcoming events

**Fete du Genet Wiltz**

May 16th (Mon)

<http://www.wiltz.lu/fr>

**Nuit des Cathedrales**

May 21st (Sat)

<http://www.visitluxembourg.com/fr>

**DIY Festival 2016**

May 28th (Sat) 14:00 –

Place: Rotondes

**ING Night Marathon**

May 28th (Sat) 19:00 –

<http://www.ing-night-marathon.lu/fr/>

※ Further information is available at each event's HP



"LIKE" us on facebook!  
<https://www.facebook.com/JLAlux>



You can now read and download back numbers of  
our Newsletters! (available from Jan 2015 editions)  
<http://www.jlaluxembourg.org/>

Don't miss the next JLA Newsletter ♪ //